

artesano  
HUMMINGBIRD DK  
(100% SUPERFINE ALPACA)



ELLA  
BY SUE HANMORE

## Materials

5(6, 6) hanks Artesano Hummingbird, Shade Quail AR001  
1 pair Brittany needles, size 4.00mm  
3 buttons  
Stitch holders

## Measurements

To fit:

**S** – 32" – 34" (81 – 86)cms

**M** – 36" – 38" (92 – 96)cms

**L** – 40" – 42" (102 – 107)cms

### Actual measurements:

38(42, 46)" 96(107, 117)cms

**Length:** 30(32, 34)" 76(81, 86)cms

**Sleeve length:** 17" (43)cms

Tension

18sts and 28 rows to 4" (10cms) on 4.00mm needles over pattern

**NB:** To achieve even change of colour, use two balls, alternating every 2 rows. However it is interesting to see what patterns materialise when only using one ball.

## Abbreviations

**K** – knit

**P** – purl

**St(s)** – stitch(es)

**Inc** – increase

**Dec** – decrease

**Coe** – cast on edge

**St.st** – stocking stitch

**RS** – right side

**WS** – wrong side

**Beg** – beginning

**Tog – together**

**Sl** – slip

**LH** – left hand

**Wrap st** – bring yarn to front or back of work, sl next st,

take yarn to front or back of work, replace wrapped st back onto LH needle

**3-needle cast off** – Position 2 needles together, RS facing. Using 3rd needle, k into 1st stitch on each needle and knit together. Proceed along sts, casting off in normal way.

## Back

Using 4.00mm needles, cast on 107(115, 123)sts.

Beg with k row, work 24 rows in st.st.

Change to pattern as follows:

**1st row (RS):** purl

**2nd row:** k3, (k1 into row below, k3) to end of row.

Repeat last two rows 9 times more, ending on WS row.

Continue in pattern, decreasing 1 st at each end of next and every following 20th row to 95(103, 111)sts. Continue in pattern until work measures 22(23, 24)" 56(58, 61)cms from coe ending on WS row.

## Shape armholes

Cast off 3sts at beg of next 2 rows. 89(97, 105)sts.

**Next row:** k1, p3tog, p to last 4 sts, p3tog, k1.

**Next row:** pattern.

Repeat last 2 rows until 73(81, 89)sts remain.

**Next row:** k1, (k1, p1) to last 2 sts, k2.

**Next row:** k1, (p1, k1) to last 2 sts, p1, k1.

Repeat last 2 rows until armhole measures 8(9, 10)" 20(23, 25)cms ending on WS row.

## Shape shoulders

**Next row:** rib 24(27, 30)sts,

turn, leaving remaining sts on st. holder.

**\*Next row:** rib 16(18, 20)sts, wrap next st, turn, rib back to neck edge.

**Next row:** rib 8(9, 10)sts, wrap next st, turn, rib back to neck edge.

**Next row:** rib across all sts, working together wrap and wrapped st from row below. Leave 24(27, 30)sts on st. holder.

Returning to sts on st holder, place centre 25(27, 29)sts on holder for back neck.

Repeat from \* to end.

## Right Front

Using 4.00mm needles, cast on 51(55, 59)sts.

Beg with k row, work 24 rows in st. st.

Comm pattern as for Back, dec 1 st at beg of 21st and every following 20th row to 45(49, 53)sts. Continue straight until work measures same as Back to armhole shaping, ending on 2nd row of pattern.

## Shape armhole

Cast off 3sts at beg of next row. 42(46, 50)sts. Work 1 row. Dec 2sts as for Back at beg of next and every following alt row to 34(38, 42) sts ending on WS row.

Next row: k1, (k1, p1) to last st, k1.

Cont in rib as set until armhole measures 6(6 ½, 7)" 15(17, 18)cms ending on RS row.

## Shape neck

Cast off 4sts at beg of next row.

Dec 1 st at neck edge on next

and every following alt row to 24(27, 30)sts. Cont straight until armhole measures same as Back to shoulder shaping, ending on RS row.

### **Shape shoulder**

**Next row:** rib 16(18, 20)sts, wrap next st. Turn.

**Next row:** rib

**Next row:** rib 8(9, 10)sts, wrap next st. Turn.

**Next row:** rib.

**Next row:** rib across all sts, working together wrap and wrapped st from row below. Leave sts on st holder.

### **Left Front**

Work as for Right Front, reversing all shapings and working 1 extra row before armhole, neck and shoulder shapings.

### **Sleeves (work 2)**

Using 4.00mm needles, cast on 71(75, 79)sts.

Work 24 rows in st.st.

Work in pattern as for Back increasing 1 st at each end of 9th and every following 10th row to 89(93, 94)sts. Taking extra sts into pattern. Continue straight in pattern until work measures 18" (46cms) from coe ending on WS row.

### **Shape sleeve top**

Cast off 3sts at beg of next 2 rows. 83(87, 91)sts.

Dec 2sts at each end of next and every following alt row to 67(71, 75)sts. Work 1 row.

Dec 1 st at each end of next and every following alt row to 37sts.

Dec 1 st at each end of every row to 17sts, ending on WS row. Cast off.

### **Finishing**

Press or block all pieces.

Join shoulder seams using 3-needle cast off.

Using fine back stitch, join side seams. Turn bottom band to wrong side and slip stitch in place.

### **Right Front Band**

Using 4.00mm needles and starting at bottom edge, pick up 132(136, 140)sts to front neck shaping. Beg with purl row, work 5 rows in st. st. Buttonhole row: k to last 30(32, 34)sts, cast off 4sts, k12(13, 14)sts including st on needle, cast off 4sts, k to end of row.

**Next row:** p, casting on 4sts over cast off sts from row below. Work 10 rows in st. st. Repeat 2 buttonhole rows. Work a further 5 rows in st. st. Cast off.

### **Left Front Band**

Work as for Right Front Band, omitting buttonholes. Turn bands to wrong side and slip stitch in place. Catch two edges of buttonholes together.

### **Collar**

Using 4.00mm needles, with RS facing, and starting at top edge of Right Front Band, pick up 10sts from front band, 22(24, 26)sts to shoulder seam 5sts from Back side neck, work across 25(27, 29)sts from st holder, 5sts from back side neck, 23(25, 27)sts from Left

**Front neck,** 10sts from top of left front band. 100(106, 112) sts.

**1st row:** k2, (p1, k1) to last st, k1.

**2nd Row:** (k1, p1) to last st, k1.

Repeat last 2 rows once.

**Buttonhole row:** rib 4, cast off 4sts, rib to end of row. Next row: rib, casting on 4sts over cast off sts from previous row.

Continue in rib until Collar measures 8" (20cms). Cast off loosely in rib.

Join sleeve seams. Slip stitch cuff band to wrong side. Set in sleeves to armholes easing in any fullness.

Sew on buttons to correspond with buttonholes.

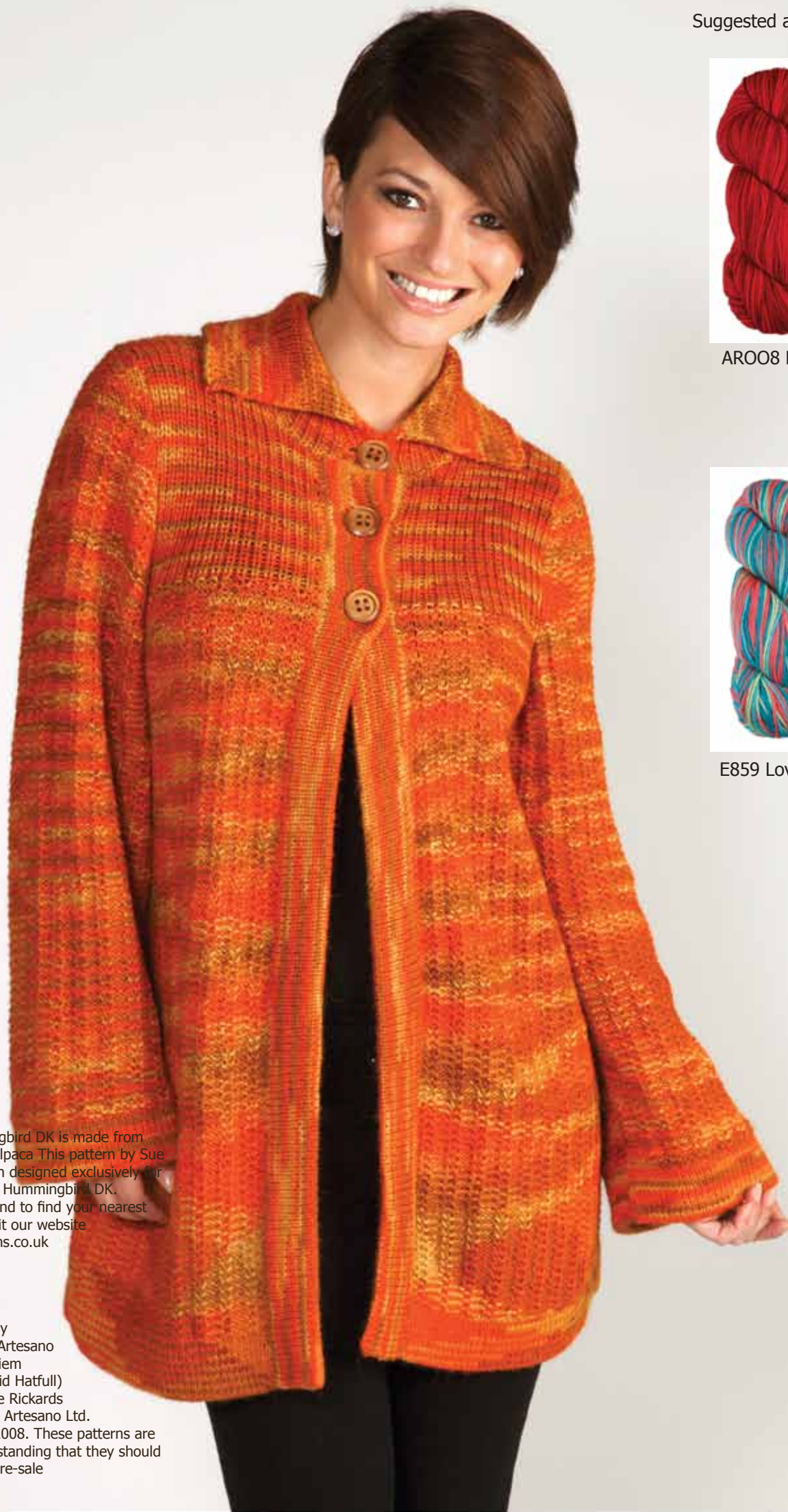
Suggested alternatives



ARO08 Robin



E859 Lovebird



Artesano Hummingbird DK is made from 100% Superfine Alpaca This pattern by Sue Hanmore has been designed exclusively for use with Artesano Hummingbird DK. For more details and to find your nearest stockist please visit our website [www.artesanoyarns.co.uk](http://www.artesanoyarns.co.uk) or call us on 0118 9503350

Credits:  
Knitwear Design by Sue Hanmore for Artesano  
Photography by Diem Photography (David Hatfull)  
Modelled by Amiee Rickards  
Graphic Design by Artesano Ltd.  
© Artesano Ltd. 2008. These patterns are sold on the understanding that they should not be knitted for re-sale