

KANDINSKY

BY ROS WILSON

Funky jacket/cardigan with geometric intarsia detail inspired by Kandinsky's paintings. The Silk Blend yarn gives great structure while being light and warm.

artesano

Curves 2 (sizes 16-24)



MANOS
del URUGUAY

Funky jacket/cardigan with geometric intarsia detail inspired by Kandinsky's paintings. The Silk Blend yarn gives great structure while being light and warm. Surface embroidery in silver echoes the buttons to add extra bling. As an alternative colourway to the jewel colours shown, try the 'Autumnal' alternative shown on back page.

Sizes: 16[18:20:22:24]

To fit Bust: 97[102:107:112:117]cm
38.2(40.2, 42.1, 44.1, 46.1)"

Overall finished Length

75[76.5:78:79:80]cm

29.5(30.1, 30.7, 31.1, 31.5)

Figures in square brackets refer to larger sizes; where there is only one set of figures this applies to all sizes.

You will need:

Manos del Uruguay Silk Blend – 100 gms

Colorway shown in Photo:

Main Colour: 7[7:8:8:9] hanks in shade 2401 Danube

Contrast A: 1 hank in shade 2660 Caspian

Contrast B: 1 hank in shade 2325 Arctic

Pair of 4mm needles

Spare 4mm needle

8 stitch holders

Five buttons 2 cm in diameter (silver colour)

Silver thread for embroidery.

Note: Yarn amounts given are based on average requirements and are approximate.

Tension:

22 sts and 31 rows to 10cm over Stocking Stitch.

Abbreviations:

St(s) = Stitch(es)

K = knit

P = purl

St st = stocking stitch (one row K one row P)

RS = right side of garment

WS = wrong side of garment

Dec 1 = K or p the next two stitches together

Mk1 = create a new stitch by knitting or purling into the loop below the next st.

Inc 1 = increase by knitting or purling twice into the next stitch.

Single Rib = even number of stitches, Row 1: (K1, P1) to end. Row 2: (K1, P1) to end. For uneven number of stitches, always start next row

with the opposite stitch to the one you finished on. i.e. if your last stitch was K, start next row with P.

Back

Wind off three balls of Main Colour and one of each of the contrast colours before starting the back.

With 4mm needles and Main Colour cast on 182[192:200:210:219] sts using the 'Thumb' method.

Work 14 rows of single rib.

Next row: K2[0:2:0:0] *K1,

K2tog repeat from * to end (122[128:134:140:146] sts).

Next row: Purl

Start of Intarsia Motif 1:

K64[67:70:73:76], join in contrast A (Caspian) and K15 (the first row of the Intarsia Chart for 'Back'), start a second ball of Main Colour and knit to end of row.

Continue knitting the Back from the Intarsia Chart, joining in extra balls of yarn as required) and at the same time decrease 1 st at each end of the next and every following 20th row until there are 116[122:128:134:140] sts (the decreases will continue after the first Intarsia motifs as you work towards the waist in Main Colour.)

Work straight until Back measures 30 cm (waist).

Increase 1 st at each end of the next and every following 20th row until there are 122[128:134:140:146] sts, ending with a purl row.

Start of Intarsia Motif 2:

K55[58:61:64:67], join in Contrast B and K20, join in second ball of Main Colour and K to end.

Continue working from the chart while continuing the Back as follows:

Work straight until back measures 50 cm, ending with a purl row.

Back Armhole Shaping

Cast off 5[5:5:6:6] sts at the beginning of the next two rows (112[118:124:128:134] sts).

Work 6 rows, decreasing 1 st at each end of each row (100[106:112:116:122] sts)

Work 18[20:22:22:22] rows, decreasing 1 st at each end of each K row (82[86:90:94:100] sts)

Work straight until back measures 24[25.5:26.5:28:29] cm from beginning of armhole shaping, ending with a purl row.

Back Neck

K28[29:30:32:34] and slip the next 26[28:30:30:32] sts onto a stitch holder. Turn.

Cast off 7[7:7:8:9] sts at the beginning of next row and purl to end.

(21[22:23:24:25] sts).

Knit 1 row.

Slip remaining sts onto a stitch holder. Transfer remaining 28[29:30:32:34] stitches to the empty needle.

Rejoin yarn at armhole edge and purl 1 row.

Next row, cast off 7[7:7:8:9] sts and K to end. (21[22:23:24:25] sts)

Purl 1 row.

Slip remaining sts onto a stitch holder.

Right Front

With Main Colour cast on 100[104:110:112:118] sts.

Work 14 rows of single rib.

Next row, rib 14 (front edge),

K0[3:0:3:0] *K1, K2tog to last

2[0:0:2:2] sts, K2[0:0:2:2]

(72[75:78:81:84] sts)

Continue with front ribbed band and stocking stitch main body as follows:

Right Front Row 1: P to last 14 sts, single rib 14 (keeping continuity of rib at front edge)

Right Front Row 2: Rib 14, K to end.

Repeating these two rows, continue with Right Front as follows:

Work 60 rows, decreasing 1 st at side edge on the next and every 20th row while incorporating Intarsia Motif 3 as follows:

Start of Intarsia Motif 3 (hidden pocket)

11 rows from start of St St with WS facing, start motif as follows: P32[35:38:41:43], with Contrast B, P1, in MC P to last 14 sts, rib 14 (this is the first row of the Intarsia Motif) Keep continuity of St St and front 14 rib stitches, continue working from the chart.

Buttonhole 1: On the 22nd row from the start of the St St (RS facing) work buttonhole as follows (while continuing to work Motif 3):

Button Hole Row 1: Rib 6 sts, cast off 2 sts, rib remaining 6 sts K to end, keeping continuity of Intarsia Motif. Button Hole Row 2: work to last 14 sts, rib 6, cast on 2 sts, rib to end.

Continue with Motif 3 until you get to row 20 of the motif. To create pocket opening do not twine yarns together on the upper edge of the diamond shape closest to the side edge. From this point you will dec 1 st on each row of the Contrast B pocket edge while increasing 1 st on each row of the MC pocket edge.

Buttonhole 2: Continue with de-

creases and intarsia until you have worked 42 rows from start of St St. Repeat buttonhole rows.

When decrease rows are completed you will have 69[72:75:78:81] sts.

Work 2 rows (now 62 rows from start of St St) and then work Buttonhole 3

Work a further 20 rows, then work Buttonhole 4.

Work straight until you reach 82 rows from the start of the St St and work Buttonhole 5.

Continue straight until work measures 30 cm from the cast on edge. Increase 1 st at side edge on the next row (70[73:76:79:82] sts).

Work 12 further rows (102 rows from the start of the St St) and work Buttonhole 6.

Work 2 further rows straight.

You will now start to increase the width of the front ribbing to create a Lapel as follows:

Start of Right Lapel

Next row: Rib 16 sts, K to end.

Next row: Purl to last 16 sts, rib 16.

Work a further 18 rows, incorporating 2 additional stitches into front ribbing on the 4th row and every 6th row thereafter and at the same time increasing 1 st at side edge on the 4th and following 20th row (72[75:78:81:84] sts).

Continue to incorporate 2 stitches into the front ribbing on every 6th row from this point onwards until Front measures 50 cm, ending with a knit row.

Front Right Armhole Shaping

Whilst continuing the incorporation of the rib stitches, (WS) Cast off 5[5:5:6:6] sts at the beginning of the next row (67[70:73:75:78] sts).

Work 6 rows, decreasing 1 st at armhole edge on each row (61[64:67:69:72] sts)

Work 18[18:20:22:22] rows, decreasing 1 st at armhole edge of each K row (52[55:57:58:61] sts)

Work straight until Front measures 15.5[16:16.5:17.5:18.5] cm from start of armhole shaping, ending with a purl row.

Right Neck Shaping

Keep continuity of the rib stitch incorporation throughout this shaping.

With RS facing rib the first 20[22:23:23:25] stitches and slip these onto a stitch holder. Rib across remainder of rib section and then knit the remainder of the row. (32[33:34:35:36] sts)

Next row: purl to rib section then rib to end.

Work 4 rows, casting off 3 sts ribwise at the beginning of the next and following RS row (26[27:28:29:30] sts).

Work 4 rows, decreasing 1 st at neck edge on 2nd and 4th rows (24[25:26:27:28] sts)

Work 9 rows, decreasing 1 st at neck edge next on every 3rd row (21[22:23:24:25] sts).

Work straight until Front measures 25[26.5:27.5:29:30] cm from beginning of armhole shaping.

Slip remaining stitches onto a stitch holder.

Left Front

With Main Colour cast on 100[104:110:112:118] sts.

Work 14 rows of single rib.

Next row, K2[0:1:2:2] *K1, K2tog to last 14[17:14:17:14] sts, K0[3:0:3:0], rib 14 (front edge), noting that rib will start with a K stitch (72[75:78:81:84] sts).

Continue with front ribbed band and stocking stitch main body as follows:

Left Front Row 1: Rib 14 (keeping continuity of rib), P to end.

Left Front Row 2: K to last 14 sts, Rib 14.

Repeating these two rows, continue with Left Front as follows:

Work 60 rows, decreasing 1 st at side edge on the next and every 20th row while incorporating Intarsia Motif 4 as follows:

Start of Intarsia Motif 4

14 rows above the end of the hem ribbing, with right side facing, K6[9:12:15:18], in Contrast A K25, join in a new ball of Main Colour and work to end of row, keeping continuity of ribbing.

Continue with remaining rows of Motif 4 while keeping continuity of decreasing. When you reach the 'pocket opening' (end of Contrast A square), slip the 21 Contrast A stitches onto a stitch holder. On the subsequent row, cast on 21 stitches in Main Colour. Continue decrease continuity until there are 69[72:75:78:81] sts.

Work straight until Front measures 30 cm (waist) ending with a RS row. Increase 1 st at side edge on next row 70[73:76:79:82] sts

Work 10 rows and with RS facing, start Intarsia Motif 5 as follows:

Intarsia Motif 5

In Main Colour K 32[35:38:41:44], in Contrast B K9, join in a new ball of Main Colour and work to end, keeping continuity of ribbing.

Continue with Intarsia Motif from chart to row 6.

Start of Left Lapel (7th row of the chart)

You will now start to increase the width of the front ribbing to create a Lapel as follows:

Continuing to follow the Intarsia Motif, K to last 16 sts, Rib 16.

Rib 16, Purl to last st.

Work a further 18 rows, whilst completing Intarsia Motif 5 and incorporating 2 additional stitches into front ribbing on the 4th row and every 6th row thereafter and at the same time increasing 1 st at side edge on the 4th and following 20th rows (72[25:78:81:84] sts).

Continue to incorporate 2 stitches into the front ribbing on every 6th row from this point onwards until Front measures 50 cm, ending with a purl row.

Front Left Armhole Shaping

(RS) Cast off 5[5:5:6:6] sts at the beginning of the next row (67[70:73:75:78] sts).

Work 6 rows, decreasing 1 st at armhole edge on each row (61[64:67:69:72] sts)

Work 8 rows, decreasing 1 st at armhole edge of each K row (57[60:63:65:68] sts)

Purl 1 row.

Start of Intarsia Motif 6

With RS facing, Dec 1 st at armhole edge, K6 in Contrast A K17, join in a second ball of Main Colour and work to end, keeping continuity of rib. (56[59:62:64:67] sts)

Continue with Intarsia Motif 6 from chart while shaping armhole as follows:

Work 8[8:10:12:12] rows, decreasing 1 st at armhole edge on each K row (52[55:57:58:61] sts)

Continuing the incorporation of rib stitches, work straight until Front measures 15.5[16:16.5:17.5:18.5] cm from start of armhole shaping, ending with a knit row.

Left Neck Shaping

Keep continuity of the rib stitch incorporation throughout this shaping.

With WS facing rib the first 20[22:23:23:25] stitches and slip these onto a stitch holder. Rib across remainder of rib section and then purl the remainder of the row (32[33:34:35:36] sts).

Work 4 rows, casting off 3 sts at the beginning of the 2nd and 4th rows. (26[27:28:29:30] sts)

Work 4 rows, decreasing 1 st at

neck edge on 2nd and 4th rows.
(24[25:26:27:28] sts)
Work 9 rows, decreasing 1 st
at neck edge on every 3rd row
(21[22:23:24:25] sts).
Work straight until Front measures
25[26.5:27.5:29:30] cm from begin-
ning of armhole shaping.
Slip remaining stitches onto a stitch
holder.

Right Sleeve

With Contrast A cast on 117 sts using
the thumb method.

Work 2 rows in single rib.

□

Change to Main Colour and work a
further 35 rows in single rib.

Next row (RS), *K1, K2tog repeat
from * to end of row (78 sts).

St st 16 rows straight.

Inc 1 st at each end of the

next and every following

8th[8th:6th:6th:6th] row until there
are 98[102:106:110:114] sts.

Continue straight until sleeve meas-
ures 40 cm from the first row of st
st, ending in a purl row (the ribbed
edge is folded back to adjust the final
sleeve length).

Sleeve top shaping:

Cast off 5[5:5:6:6] sts at the be-
ginning of the next two rows

(88[92:96:98:102] sts)

Work 8[10:10:10:10] rows, decreas-
ing 1 st at each end of every row

(72[72:76:78:82] sts)

Work 2[2:4:4:8] rows, decreasing

1 st at each end of every knit row

(70[70:72:74:74] sts)

Work 15[15:15:18:18] rows, de-
creasing 1 st at each end of every

3rd row (60[60:62:62:62] sts)

Work 18 rows, decreasing 1 st

at each end of every knit row

(42[42:44:44:44] sts)

Work 7 rows, decreasing 1 st at each
end of every row (28[28:30:30:30]
sts)

Cast off remaining sts.

□

Left Sleeve

With Contrast B cast on 117 sts using
the thumb method.

Work 2 rows in single rib.

Work remainder of sleeve as Right

Sleeve from □ to □

Surface Embroidery

Using silver thread and chain stitch,
work the detail lines as shown in the
photograph of each chart.

Pockets

Right Front Pocket Facing

Place the Right Front with wrong side
facing and hem uppermost. Using
Main Colour and starting on the right
side of the nearest edge (Main Colour)
of the pocket opening, pick up 24 sts
purlwise.

Continue in st st as follows:

Next row: Knit

Next row: Purl

Next row: Knit

Next row: Mk1, P to last 2 sts,

P2tog.

Continue repeating these 4 rows until
the pocket facing covers the diamond
shape of Intarsia Motif 3. Cast off
loosely.

Slip stitch the facing on the wrong
side to the three sides of the dia-
mond, leaving the original cast on
edge as the pocket opening.

Left Front Pocket Facing

Place the Left Front with wrong side
facing and hem uppermost. Starting
at the right edge of the pocket, with
Main Colour pick up 21 sts purlwise
from the nearest edge (without stitch
holder) plus 4 sts from the Contrast B
square.

Starting with a Knit row, work 28 rows
of stocking stitch.

Cast off loosely.

Left Front Pocket Edge

Turn the Left Front to the right side,
with the hem at the bottom.

With Contrast A, pick up and knit the
stitches from the stitch holder at the
top of the pocket opening.

Work 4 rows of garter stitch and cast
off loosely.

With Wrong Side facing, and using
Main Colour slip stitch the pocket Fac-
ing to the three sides of the Intarsia
square.

Turn to the Right Side and using
Contrast A, slip stitch the sides of the
Pocket Edge neatly into place, the left
hand edge butting the smaller Con-
trast B square.

Press both pockets lightly from the
inside.

Shoulder Seams and Collar

Right Shoulder Seam

Transfer the stitches from Right Front
shoulder stitch holder onto one of the
4mm needles with the point towards
the neck. Transfer the stitches from
the Right Back shoulder stitch holder
to the second 4mm needle in the
same way, also with the point towards
the neck edge.

With right sides together and the
needles parallel, create shoulder seam
as follows:

Hold the pair of needles with the two
sets of stitches in the left hand and
take the spare needle in the right
hand.

Push the point of the spare needle
through the first stitch on each nee-
dle.

Knit this stitch onto the spare nee-
dle, taking care when easing the two
stitches off the left needles.

**Push the spare needle through the
next two stitches and knit onto right
hand needle.

Pass the first stitch over the second
stitch (as per normal cast off).**

Repeat from ** to ** until there is
only one stitch on the right hand
needle. Break yarn and pass through
this last stitch.

Left Shoulder Seam

Follow the instructions for Right
Shoulder Seam

Press seams from the inside, following
ball-band instructions.

Collar

With a 4mm needle and right side fac-
ing, pick up and knit stitches in single
rib as follows:

From right front stitch holder:

20[22:23:23:25] sts

From stitch holder to shoulder seam:

24[24:26:28:28] sts

From shoulder seam to back stitch

holder: 14[14:14:16:16] sts

From back stitch holder:

26[28:30:30:32] sts

From stitch holder to left shoulder

seam: 14[14:14:16:16] sts

From shoulder seam to left front stitch

holder: 24[24:26:28:28] sts

From left front stitch holder:

20[22:23:23:25] sts

Total: 142[148:156:164:170] sts.

Work 10cm in single rib.

Cast off loosely in single rib pattern.

Sleeves and Side Seams

Identify Right and Left Sleeves by
their colour trim

Right Sleeve starts with Contrast A

Left Sleeve starts with Contrast B.

Pin and stitch sleeves, right sides
together, into the armholes.

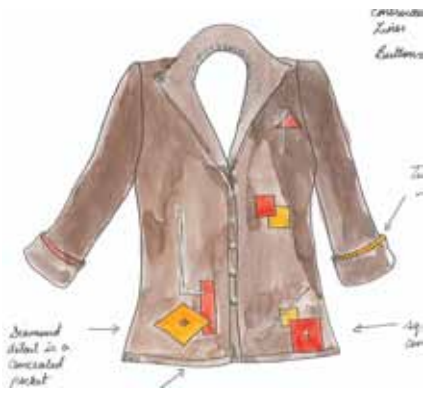
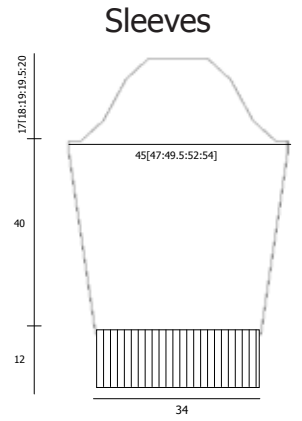
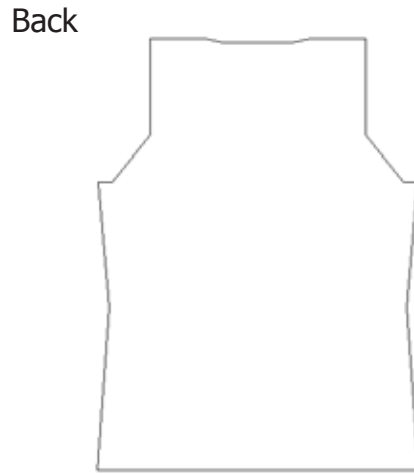
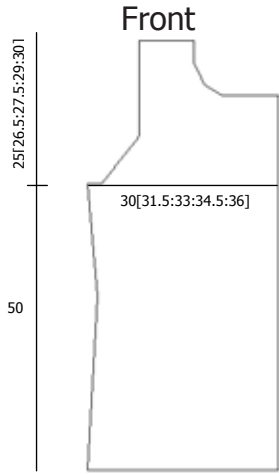
With right sides together, pin and
stitch underarm/sleeve seams, using
mattress (ladder) stitch to butt and
join ribbed sections, then backstitch
for the rest.

Press seams from the inside accord-
ing to ball-band instructions, avoiding
ribbed sections.

Buttons

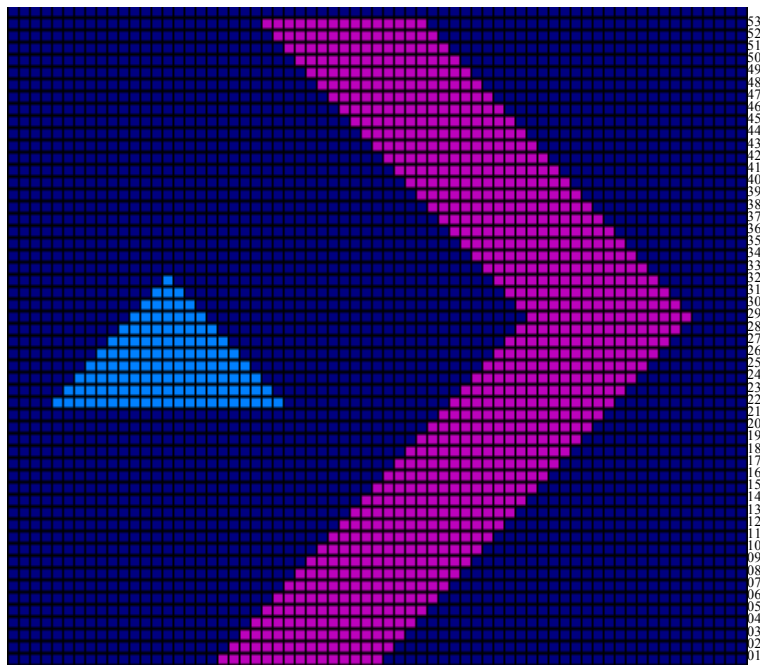
Lay the garment flat so that the right
front band (button hole edge) lies

over the left hand front band, hems and collar matching.
 Place a dressmaking pin through each of the buttonholes into the left front band (horizontally) to mark the five button positions.
 Lift right front away and stitch the buttons into position.
 Wear 'Kandinsky' with pride – you have created a real work of art!



Alternative Colourway:
 Autumn
 Main Colour: 7 hanks
 2200 Arabian
 Contrast A: 1 hank in
 2220 Bering
 Contrast B: 1 hank in
 2106 Atlantic

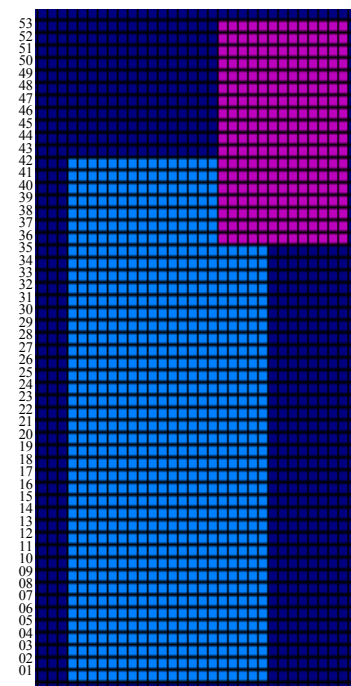
Intarsia Motif 1



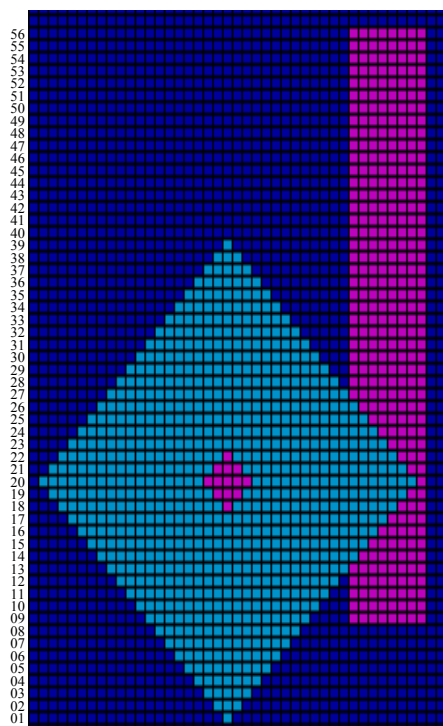
Important:

We recommend buying enough yarn to complete a project. If there is a great difference between skeins, we recommend knitting two rows from one skein and two rows from another skein to give an overall blended effect.

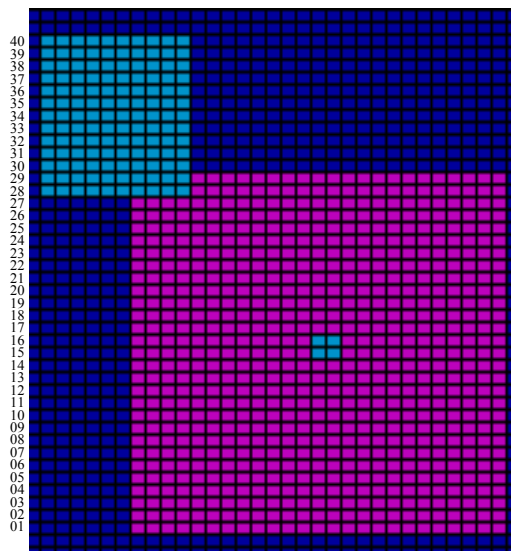
Intarsia Motif 2



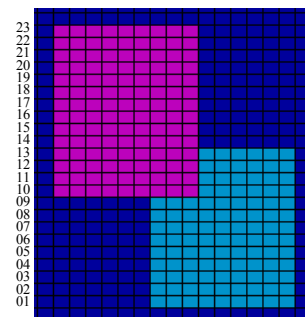
Intarsia Motif 3



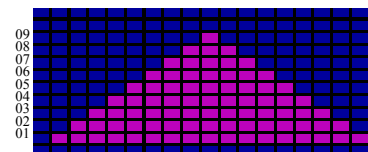
Intarsia Motif 4



Intarsia Motif 5



Intarsia Motif 6



For more details of the collection and to find your nearest stockist please visit our website www.artesanoyarns.co.uk or call us on 0118 9503350

Credits: Knitwear Design by Ros Wilson for Artesano Ltd.
Graphic Design by Fern Spooner
Styling by Fern Spooner and Sue Coomber
Photography by David Hatfull of Diem Photography.
© Artesano Ltd. 2008. These patterns are sold on the understanding that they should not be knitted for re-sale