

SWING JACKET

BY ROS WILSON



Curves (sizes 16-24)

manos del uruguay wool clasica and artesano DK

Sizes:

16[18:20:22:24]

Actual jacket measurements:

Bust: 115[120:125:130:135]cm

(45[47:49:51:52]ins)

Overall Length 62[65:68:71:74]cm

24.5(25.5:27:28:29]ins)

Yarn

Manos Wool Classica

11[11:12:13:14] Skeins 6980 (Main colour)

Artesano DK Pure Superfine Alpaca

2[2:2:2:3] balls Peru (Code 0178)

(for edge trim and back pleat)

Needles

Pair of 5.5mm needles.

Pair of 3.25mm needles

Pair of 3.25mm double pointed (sock) needles

6mm crochet hook

Artesano recomend Brittany Needles

Three large buttons (3.5 mm diameter)

6 stitch markers or contrasting threads.

Large darning or tapestry needle for sewing seams.

Note: Yarn amounts given are based on average requirements and are approximate.

Tension:

Main Jacket:

15 sts and 27 rows to 10cm in Moss st using 5.5mm needles and Manos Wool Clasica.

Note: This yarn has a naturally variable thickness. It is recommended to knit two tension squares from two different skeins and to average the results off both.

Pleat

21 sts and 40 rows to 10 cm in st st using 3.25mm needles and Artesano DK Pure Superfine Alpaca. The rows are critical for the pleat length. Use larger or smaller needles if necessary to obtain correct tension.

Abbreviations:

St = Stitch

K = knit

P = purl

St st = stocking stitch

RS = right side of garment

WS = wrong side of garment

K2tog: K the next two stitches together

P2tog: P the next two stitches together

Inc = increase by knitting or purling twice into the next stitch.

Moss st = Moss st. *K1, P1, repeat

to end of row. Always start the next row with the same stitch you finished previous row on.

Left and Right Backs

Because this is moss st there is no right or wrong sides. Work both backs at the same time to ensure consistency.

With 5.5mm needles, cast on 15[15:17:13:16] sts. Start a new ball of yarn and repeat to create a second set of stitches. The "tails" of yarn will represent the centre back.

Instructions are given for one set of stitches, work the second set of stitches in the same way.

*Work 1 row in moss st (K1, P1 to end).

Moss st next row to end, then cast on a further 13[14:14:12:12] sts.*

Repeat from * to * 2[2:2:3:3] times more. (54[57:59:61:64]) sts

Work 80[88:88:88:96] rows, decreasing 1 st at side edge on every 8th row. (44[46:48:50:52])sts

Work 10[6:10:12:13] rows straight.

On next row, increase 1 st at side edge. (45[47:49:51:53] sts)

Work 12[12:12:14:12] rows straight, ending at side edge.

Armhole Shaping

Cast off 3[3:4:4:4] sts, work to end. (42[44:45:47:49] sts). Place a contrasting thread or stitch marker through the last stitch worked at centre back edge.

Work 7 rows, dec 1 at armhole edge on each row. (35[37:38:40:42]) sts.

Work 4 rows, dec 1 at armhole edge on every alternate row. (33[35:36:38:40]sts)

***Work 5 rows straight.

Next row, dec 1 at armhole edge.***

Repeat from *** to *** once more. (31[33:34:36:38] sts)

Continue in moss st until work measures 23[24:25:26:27]cm from start of armhole shaping, ending at centre back.

Neck and shoulder shaping

Row 1: Cast off 9[10:10:11:12] sts (22[23:24:25:26] sts), moss st to end.

Row 2: Cast off 5[5:6:6:6] sts at shoulder edge, moss st to end. (17[18:18:19:20] sts)

Row 3: Cast off 6 sts at neck edge, moss st to end. (11[12:12:13:14] sts)

Row 4: Cast off 5[5:5:6:6] sts at shoulder edge, moss st to last 2 sts, dec 1 (5[6:6:6:7] sts)

Row 5: Cast off remaining sts

Left Front

With 5.5mm needles cast on 57[60:62:64:67] sts.

Work 80[88:88:88:96] rows of moss st, decreasing 1 st at side edge on every 8th row. (47[49:51:53:55])sts

Work 10[6:10:12:13] rows straight.

On next row, increase 1 st at side edge. (48[50:52:54:56] sts). Place a contrasting thread or stitch marker at front edge (this will be the start of the collar.)

Work 10 further rows, decreasing one stitch at front edge only on every 5th row, (46[48:50:52:54] sts)

Work 2[2:2:4:2] rows straight, ending at side edge.

□

Armhole and front edge shaping

Cast off 3[3:3:4:4] sts, work to last 2 sts, Dec 1 (42[44:46:47:49] sts)

Work 6[6:8:8:8] rows, dec 1 at armhole edge on each row while decreasing 1 at front edge on every 3rd[3rd:4th:4th:4th] row. (34[36:36:37:39] sts)

Work 4 rows, dec 1 at armhole edge on every alternate row and one stitch at front edge on last row. (31[33:33:34:36] sts)

Work 3[6:6:6:6] rows, decreasing 1 st at each end of every 3rd row (30[31:31:32:34] sts)

Work 0[15:15:12:15] rows, decreasing 1 st at front edge only on every 3rd row (30 [26:26:28:29] sts)

Work 45[30:36:40:40] rows decreasing 1 st on front edge only on every 3rd[3rd:4th:4th:4th] row (15[16:17:18:19] sts)

Measure work from armhole edge. If necessary, work further rows straight until front measures 24[25:26:27:28] cm from beginning of armhole shaping, ending at the armhole edge.

Work 0[15:15:12:15] rows, decreasing 1 st at front edge only on every 3rd row (30 [26:26:28:29] sts)

Work 45[30:36:40:40] rows decreasing 1 st on front edge only on every 3rd[3rd:4th:4th:4th] row (15[16:17:18:19] sts)

Measure work from armhole edge. If necessary, work further rows straight until front measures 24[25:26:27:28] cm from beginning of armhole shaping, ending at the armhole edge.

Work 0[15:15:12:15] rows, decreasing 1 st at front edge only on every 3rd row (30 [26:26:28:29] sts)

Work 45[30:36:40:40] rows decreasing 1 st on front edge only on every 3rd[3rd:4th:4th:4th] row (15[16:17:18:19] sts)

Measure work from armhole edge. If necessary, work further rows straight until front measures 24[25:26:27:28] cm from beginning of armhole shaping, ending at the armhole edge.

Work 0[15:15:12:15] rows, decreasing 1 st at front edge only on every 3rd row (30 [26:26:28:29] sts)

Work 45[30:36:40:40] rows decreasing 1 st on front edge only on every 3rd[3rd:4th:4th:4th] row (15[16:17:18:19] sts)

Measure work from armhole edge. If necessary, work further rows straight until front measures 24[25:26:27:28] cm from beginning of armhole shaping, ending at the armhole edge.

Work 0[15:15:12:15] rows, decreasing 1 st at front edge only on every 3rd row (30 [26:26:28:29] sts)

Work 45[30:36:40:40] rows decreasing 1 st on front edge only on every 3rd[3rd:4th:4th:4th] row (15[16:17:18:19] sts)

Measure work from armhole edge. If necessary, work further rows straight until front measures 24[25:26:27:28] cm from beginning of armhole shaping, ending at the armhole edge.

□

Shoulder Shaping

Cast off 5[5:6:6:6] sts at the beginning of the next row. (10[11:11:12:13] sts)

Work one row.

Cast off 5[5:5:6:6] sts at the beginning of the next row. (5[6:6:6:7] sts)

Work one row

Cast off remaining sts.

□

Right Front

Work as left front, but incorporating buttonholes as follows:

Buttonhole 1

When the front measures 17[17.5:18.5:19:20] cm and ending at the front edge, work the two buttonhole rows as follows, keeping continuity of side shaping:

Row 1: Work 3 sts, cast off 2 sts, moss st to end.

Row 2: Work to cast off sts, cast on 2 sts, moss st to end.

Buttonhole 2

Work as for Left Front until work measures 26[27:28:29:30] cm, ending at the front edge.

Work buttonhole Row 1 and Row 2
Buttonhole 3

Work as for Left Front to the front marker.

Work three more rows and the work buttonhole Row 1 and Row 2, keeping continuity of front edge shaping.

Sleeves

Work both sleeves at the same time to ensure consistency. Moss st throughout.

With 5.5mm needles cast on two sets of 60[63:66:69:72] sts, each with its own ball of wool.

Work each set of sts as follows:

Work 32[36:36:36:45] rows, dec 1 st at each end of every 8th row (52[55:58:61:62] sts).

Work straight until sleeves measure 21[23:25:27:29] cm.

Increase 1 st at each end of the next and every 8th row until there are (64[67:70:73:76] sts)

Continue straight until sleeve measures 43[45:47:49:51] cm.

Arm top shaping:

Cast off 3[3:3:4:4] sts at the beginning of the next two rows.

(58[61:64:65:68] sts)

Work 5 rows, dec 1 st at each end of every row. (48[51:54:55:58] sts)

Work 6 rows, dec 1 st at each end of every other row. (42[45:48:49:52] sts)

Work 8[8:12:12:12] rows, dec 1 st at each end of every 4th row.

(38[39:42:43:46] sts)

Work 15[15:15:15:18] rows, dec 1 st at each end of every 3rd row.

(28[29:32:33:34] sts)

Work 4[4:6:6:6] rows, dec 1 st at each end of every alternate row.

(24[25:26:27:28] sts)

Work 2 rows, dec 1 st at each end of every row. (20[21:22:23:24] sts)

Cast off remaining sts.

Pockets

Knit both at the same time.

With 6mm needles, cast on two sets of 22[22:24:24:26] sts. Work each set of sts as follows:

Work 22[22:24:26:28] rows in moss st.

*Next row, cast off 2 sts (this is the side edge), moss st to end.

Moss st 1 row.* (20[20:22:22:24] sts)

Repeat these two rows 5[5:6:6:7] times more (10 sts).

Dec 1 st at side edge on each of the next 10 rows.

Fasten off last st.

Left Pocket I-cord edge

This gives you a chance to practice this intriguing tubular edging.

Take 1 pocket and place it so that the narrower end is closest to you and 'sloped edge' is on the right.

With 3.25 mm double pointed needles and Chile DK, cast on 5 sts.

Do not, under any circumstances turn the needle. You will always work the stitches in the same direction, pulling the yarn round behind the needle to start the next row – counter-intuitive, but it works!

*Slide the stitches to the right hand side of the needle.

With the point of the needle pick up the loop from the bottom corner of the pocket, as shown in the illustration.

You now have 6 sts on your needle, with the tail of the yarn on the left hand stitch.

Take the yarn above and behind the needle to bring it round to the right hand side.

K the first two sts together, pulling the yarn tight, and K remaining sts at normal, relaxed tension.*

Repeat from * to *, picking up the first loop again so that 2 i-Cord rows will have been knitted for this first loop.

**Slide sts to the right hand side of the needle.

Pick up the next loop from the 'sloped edge' with the point of the needle.

Bring yarn round to the right

K2tog, K to end.

Slide sts to the right hand side of the needle.

Pick up the same loop with the point of the needle.

Bring yarn round to the right.

K2tog, K to end.**

Repeat from ** to ** for each loop along the edge.

When the final loop has been worked, bring yarn round to the right and cast off.

Right Pocket I-cord edge

Starting with the wider end of the pocket closest to you, repeat the instructions as for Left Pocket.

Note for each pocket, the RS will be the side which has the narrower, 'tidy' tube. The WS will have the wider edging with a line of the main jacket stitches showing through.

Collar

The collar is worked in two pieces in moss st. Work both pieces at the

same time to ensure symmetry.

With 5.5mm needles cast on 2 st.

With a new ball of yarn, cast on another 2 sts.

In moss st throughout, and working each set of stitches the same continue as follows:

Next row, P1, K twice into the last st. (3 sts)

Work 3 rows K1, P1, K1

On next row, moss st to last st, inc 1.

This will be the 'upper edge' (4 sts)

Work 12[12:15:18:18] rows, inc 1 st on upper edge on every 3rd row. (8[8:9:10:10] sts)

Work 56[60:60:60:64] rows, inc 1 st on upper edge on every 4th row (22[23:24:25:26] sts)

Work 20 rows, inc 1 st on upper edge on every 5th row. (26[27:28:29:30] sts)

Work 27[29:31:33:35] rows straight, ending at the straight edge.

Centre back shaping

Cast off 12[13:14:15:16] sts, moss st to end. (14 sts)

Moss st 1 row

Cast off 5 sts, moss st to end (9 sts)

Moss st 1 row

Cast off 5 sts, moss st to end (4 sts)

Moss st 1 row

Cast off remaining 4 sts.

Pleat

The pleat is worked in moss st throughout with stocking st detail to create fold lines.

Using 3.25 mm needles and Chile DK cast on 38[42:46:50:54] sts.

Next row (RS) Moss St

9[10:11:12:13], P1, Moss St

18[20:22:24:26], P1, Moss St

9[10:11:12:13]. Place a contrasting thread or stitch marker through each of the P sts. These stitches will always be worked as st st to create a fold line.

*Row 1: Moss st to marker, K1, Moss St to next marker, K1, Moss st to end.

Row 2: Moss st to marker, P1, Moss st to marker, P1, Moss st to end.

Repeat these rows 9[8:7:6:6] times more.

Repeat Row 1 once more.

Decrease row: K2tog, Moss st to first marker, P1, K2tog, Moss st to 2 sts before second marker, K2tog, P1, Moss st to last 2 sts, K2 tog.*

Repeat from * to * until 10 sts remain.

Continuing in moss st across the full row, K2tog at each end of the next and every 2nd[3rd:3rd:6th:4th] row until 2 sts remain.

K2tog, cut off yarn end and pass through final stitch to finish off.

To make up Jacket

With right sides together, pin and stitch centre back seam from neckline to marker. Leave marker in place.

With right sides together, pin and stitch shoulder seams, matching the decrease points on each side.

Pin collar in place, matching the centre collar marker with the centre back seam and the point of the collar meeting the markers on the fronts of the jacket. Slip stitch collar to garment from the right side.

I-cord edging on Collar

With right side of garment facing, starting just below the start of the collar on the left front, work I-cord edging as for Left Pocket. Ensure that edging lies flat.

If the collar edge starts to pull in, unpick the I-cord and add additional I-cord rows. Put the jacket on, pinning fronts together through the buttonholes. Make sure that the collar sits correctly with the 'tidy' side of the I-cord showing.

Sew in the I-cord tails of yarn so that the ends sit neatly on each side of the collar.

Pockets

Sew in the tails of yarn from the I-cord edging so that it sits neatly. Sew in remaining ends on wrong side of pocket.

Pin each pocket 8cm from front edge and 5cm from the hem. The longer side of the pocket is closest to the front edge of the jacket and the 'tidy' side of the I-cord is facing outwards. Place a pin in the centre of each pocket and then one pin 2 cm from each corner.

Using 'Chile' and back stitch, sew the pockets in place 5mm in from the pocket edge, using the st sts to determine even stitch sizes. Ensure that the pocket lies flat as you stitch.

Sleeve and Side Seams

With RS together, pin each sleeve evenly into its armhole and stitch seam. Lightly press seam from the wrong side in accordance with the ball band instructions.

With RS together, pin and stitch each sleeve and side seam. Press lightly.

Finishing Hem

With the 6mm crochet hook and RS facing, work a single chain of crochet loosely through the bottom edge stitches round the hem of the right side of the jacket, starting at the centre back and finishing at the

front edge. Repeat for left side of the jacket, but starting at the front edge and finishing at centre back. Finish ends of neatly on the inside, ensuring that front corners and back corners of the jacket finish in a neat point.

Pleat

Fold the hem of the pleat to the wrong side along fold line and over-stitch loosely in place as invisibly as possible.

Press the hem with a cool iron from the wrong side.

Lay the pleat RS up with the point of the triangle furthest from you. Fold the sides into the middle along the 'fold' lines. Press with a cool iron.

With RS facing, pin the pointed end of pleat behind the centre back marker on the jacket (RS of pleat to WS of jacket). Pin the pleat sides to centre back opening of jacket, wrong sides together. If necessary, move the point of the pleat up or down in the opening to achieve a smooth fit.

With RS facing, and 60cm of yarn for each side, starting at hem and finishing at the point and using Chile, use running stitch to sew each side of pleat in place. As before, use moss st loops to ensure even stitch size. Do not finish off ends yet. Hold jacket up to ensure that seams are lying flat. Unpick and restitch, if necessary to get a smooth finish. When pleats seams are lying flat, take the end of thread from the point and work back down to hem in running st, filling in the gaps from the first row of stitching. Sew in ends, hiding them in seams on the WS.

I-cord edging on Sleeves

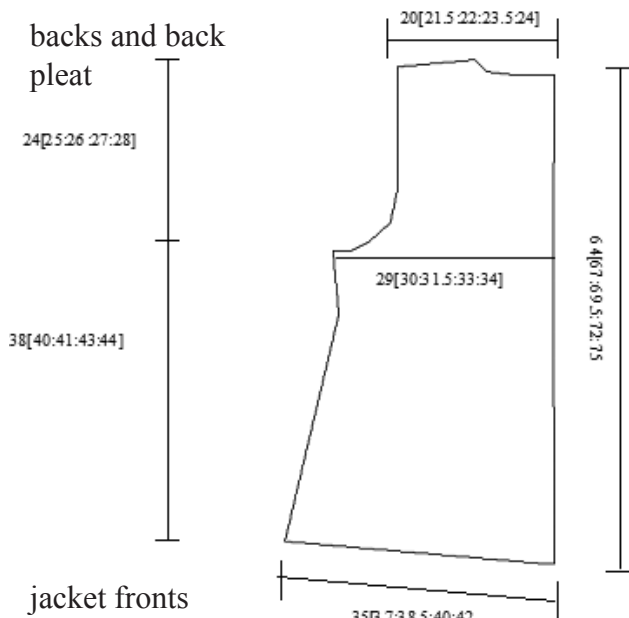
With wrong side facing, starting at the seam, work I-cord round sleeve, stopping at the sleeve seam. Do not cast off. Cut the yarn, leaving a 20 cm tail. Thread this through a needle and bring to right hand side of the sts. Pass yarn through the first st of the start of the I-cord, then back through the first st on the needle. Repeat for remaining sts and slide knitting needle out. Finish off ends on the wrong side, hidden in the sleeve seam.

Buttons

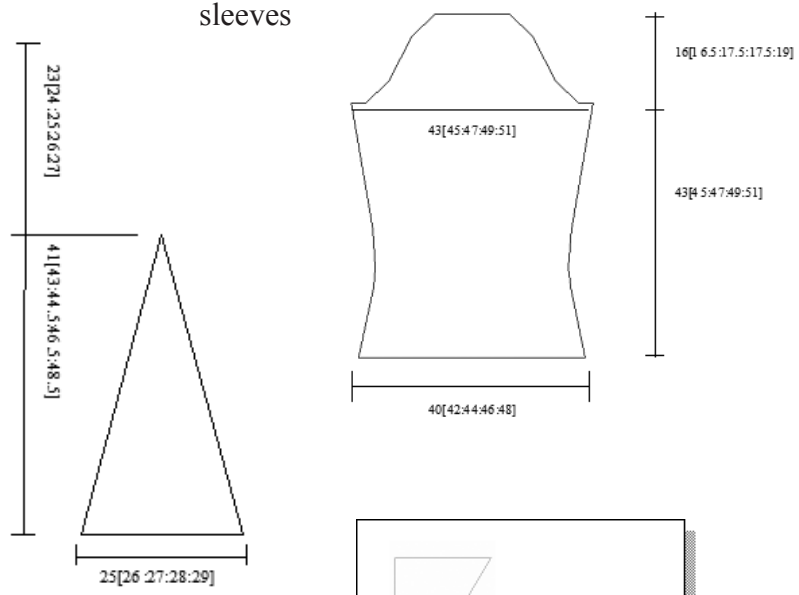
Sew on buttons on the left front, level with the button holes and 3cm in from front edge.

Put your jacket on and do a twirl in front of the mirror.

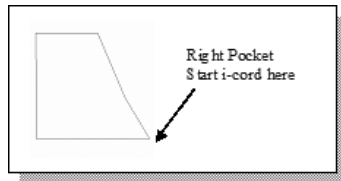
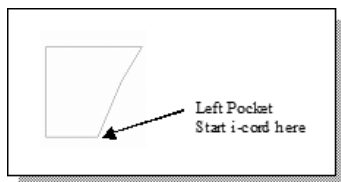
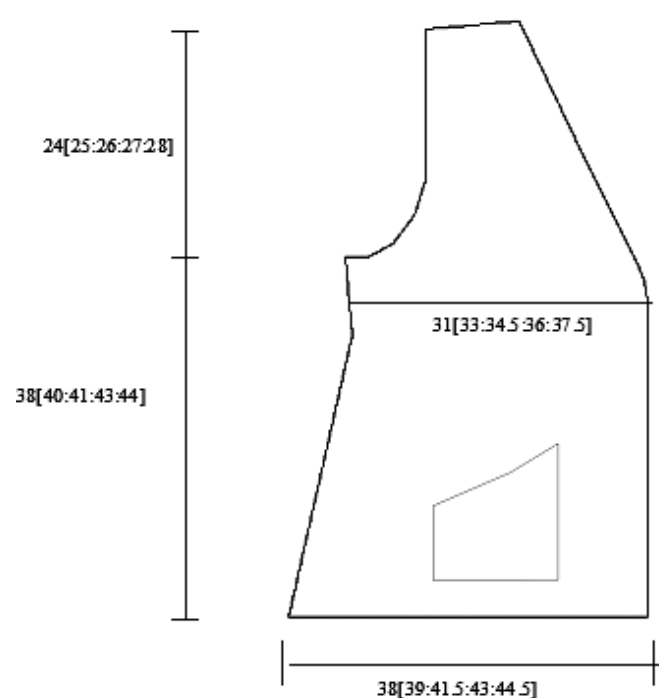
backs and back pleat



sleeves



jacket fronts



Suggested alternatives



7311 Mars



2800 Mercury

For more details of the collection and to find your nearest stockist please visit our website www.artesanoyarns.co.uk or call us on 0118 9503350

Credits: Knitwear Design by Ros Wilson for Artesano Ltd.
 Graphic Design by Artesano Ltd.
 Styling by Sue Coomber
 Model - Amy Steed of Plush Models
 Photography by David Hatfull of Diem Photography.
 © Artesano Ltd. 2008. These patterns are sold on the understanding that they should not be knitted for re-sale