

Nova Scotia

BY NICK ATKINSON



WOOL
CLASICA

SIZE

S M L XL

To fit bust cm(ins)

81-86(32-34) 91-
96(36-38) 102-107(40-42)
111-117(44-46)

Actual size

96(38) 106(42)
117(46) 124(49)

Back length

66(26) 66(26)
69(27) 69(27)

Sleeve seam

46(18) 46(18)
48(19) 48(19)

YARN Manos Classica 100g
skein

A = col 2672, Thames

5 5 6 6

B = col 2615, Earth

5 5 6 6

NEEDLES

1 pair each 6mm, 7mm,
7.5mm

TENSION

15sts and 20 rows = 10cm
square over stocking stitch us-
ing 7mm needles

ABBREVIATIONS

K = knit;

p = purl;

k1b = knit into the stitch be-
low; **st(s)** = stitch(es);

fol = follows;

rep = repeat;

patt = pattern ;

beg = beginning;

dec = knit or purl next 2
stitches together;

inc = increase by knitting into
back and front of next st;

s1 = slip the next stitch;

cont = continue

SPECIAL ABBREVIATION

Loops = worked on a WS
row, knit into back of next
stitch but do not slip stitch
from left hand needle. Place
tip of right hand needle into
front of same stitch and wind
yarn round index finger of left

hand before knitting stitch.
Place tip of left hand needle
through the front of the two
stitches and knit them to-
gether. Pull gently on loop to
tighten

BACK

Using 6mm needles and **A**,
cast on 73(79:87:93)sts and
work as folls:-

Row 1: ***k1**, p1, rep from *
to last st, k1

Row 2: *p1, k1, rep from *
to last st, p1

These 2 rows form k1, p1, rib.

Cont in rib until work measures
13cm(5ins)

Change to 7mm needles and
work body patt as folls:-

Rows 1-2: using **B**, knit

Row 3: purl

Rows 4-5: knit

Row 6: purl

Rows 7-19: using 7.5mm
needles follow fairisle chart,
starting on stitch 12(9:5:2),
working the 24 stitch repeat
3 times, and finishing on stitch
36(39:43:46).

Row 20: using 7mm needles
and **B**, purl

Rows 21-22: knit

Row 23: purl

Row 24: knit

Row 25: using **A**, knit

Row 26: purl

Row 27: using **B**, knit

Row 28: k1, loops to last st,
k1

Rows 29-31: work as rows
25-28

Row 33: using **A**, knit

Row 34: purl

These 34 rows form body patt.
Cont in patt until work meas-
ures 36cm(14ins), place mark-
ers for armhole at each end of
last row.

Continue in patt until work
measures 59(59:61:61)cm,
23(23:24:24)ins. Note patt
row.

Shape shoulders and neck

Rows 1-8: cast off 3sts beg
each row

Row 9: cast off 3(4:5:6)
sts, patt 10(12:14:15), cast
off 23(23:25:25)sts, patt
13(16:19:21)

Working on 13(16:19:21)sts

Row 10: cast off 3((4:5:6)
sts, patt to end

Row 11: cast off 2sts, patt
to end

Rows 12-13: rep rows 10-11

Row 14: cast off remaining
sts.

WS facing, rejoin yarn to re-
maining sts at neck edge and
work rows 11-14

FRONT

Work as back to 6 rows LESS
than noted row.

Shape neck

Row 1: patt 30(33:36:38),
cast off 13(13:15:17)sts, patt
30(33:36:38)

On 30(33:36:38) sts

Row 2: patt

Row 3: cast off, 2sts, patt to
end

Rows 4-5: rep rows 2-3

Row 6: patt

Row 7: dec, patt to end

Row 8: cast off 3sts, patt to
end

Row 9: dec, patt to end

Row 10: cast off 3(4:5:6)sts,
patt to end

Rows 11-16: work as rows
9-10

Row 17: patt

Row 18: cast off 3(4:5:6)sts,
patt to end

Row 19: patt

Row 20: cast off

WS facing, rejoin yarn to re-
maining sts at neck edge and
work rows 2-20

SLEEVES

Using 6mm needles and **A**,
cast on 39(39:41:41)sts and
work 8cm in k1, p1 rib

Change to 7mm needles and
body patt. Inc each end of
row 5

Row 7: S and M sizes, follow
green lines

L and XL sizes, fol

low red lines

Cont inc every following 6th row to 57sts, then every foll 4th row to 65(65:69:69)sts, working extra sts into patt. Cont without shaping until work measures 46(46:48:48) cm, 18(18:19:19)ins. Cast off.

COLLAR

Front

RS facing, using 6mm needles and **A**, pick up and knit 18sts from side front neck, 13(13:15:17)sts from centre neck and 18sts from side neck. Work as follows:-

Row 1: *p1, k1, rep from * to end

Row 2: *k1, p1, rep from * to end

Rows 3-8: rep row 1-2 three times

Change to half fisherman rib

Row 9: inc, *k1b, p1, rep from * to last 2sts, k1b, inc

Row 10: *p1,k1, rep from * to last st, p1

Row 11: s1, *p1, k1b, rep from * to last 2sts, p1, k1

Row 12: *p1,k1, rep from * to last st, p1

Row 13: inc, *p1, k1b, rep from * to last 2sts, p1, inc

Row 14: * k1, p1, rep from

* to last st, k1

Row 15: s1, * k1b, p1, rep from * to last st, p1

Row 16: *k1, p1, rep from * to last st, k1

Rep rows 10-16 until collar measures 20cm (8ins)

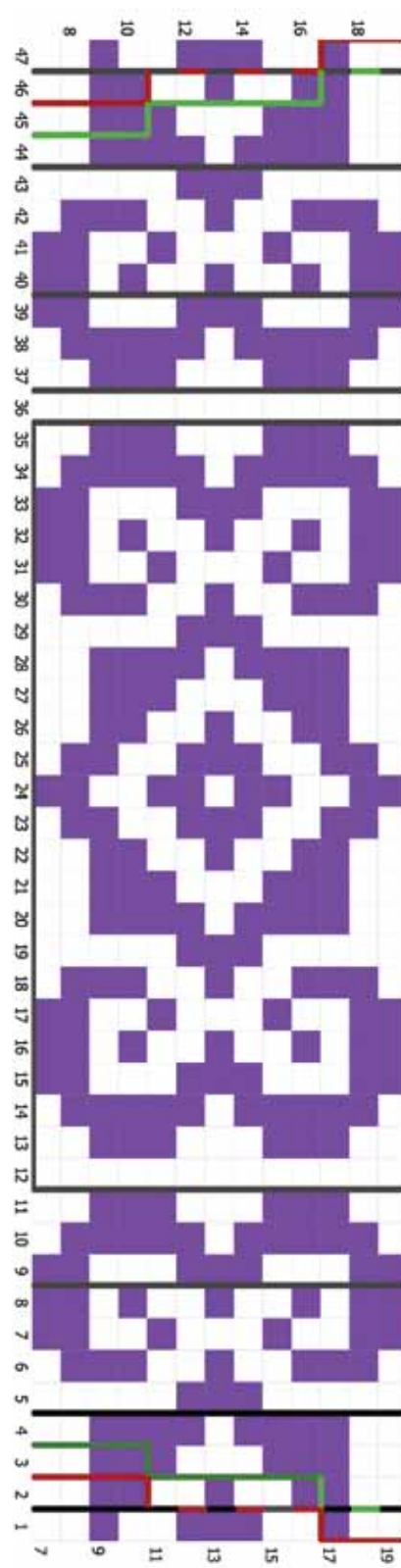
Cast off.

Back

RS facing, using 6mm needles and **A**, pick up and knit 5sts from side neck, 23(23:25:25) sts from centre back neck and 5sts from side neck. Work as for front neck.

FINISHING

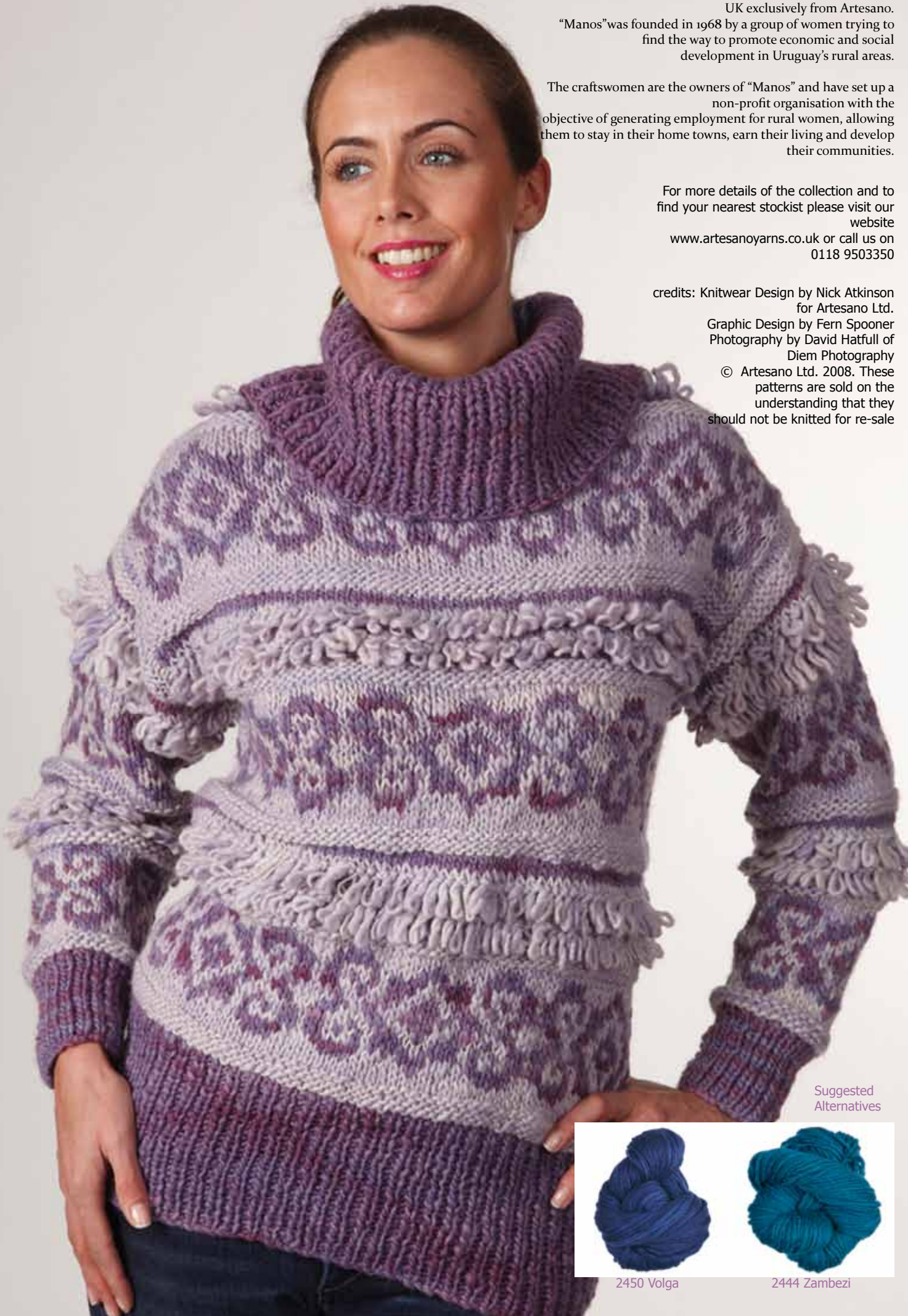
Weave in any loose ends. Sew shoulder seams. Pin sleeve cast off edge between armhole markers and stitch. Sew side and sleeve seams. Sew collar seams. Press work using a warm iron over a damp cloth.



Important:

We recommend buying enough yarn to complete a project. If there is a great difference between skeins, we recommend knitting two rows from one skein and two rows from another skein to give an overall blended effect.

This design must not be knitted for resale. Reproduction in whole or part is strictly forbidden unless prior consent has been given in writing.



“Manos del Uruguay’s” beautiful hand-spun, hand-dyed yarns are now available in the UK exclusively from Artesano.

“Manos” was founded in 1968 by a group of women trying to find the way to promote economic and social development in Uruguay’s rural areas.

The craftswomen are the owners of “Manos” and have set up a non-profit organisation with the objective of generating employment for rural women, allowing them to stay in their home towns, earn their living and develop their communities.

For more details of the collection and to find your nearest stockist please visit our website www.artesanoyarns.co.uk or call us on 0118 9503350

credits: Knitwear Design by Nick Atkinson for Artesano Ltd.
Graphic Design by Fern Spooner
Photography by David Hatfull of Diem Photography
© Artesano Ltd. 2008. These patterns are sold on the understanding that they should not be knitted for re-sale

Suggested Alternatives



2450 Volga

2444 Zambezi