

*Quebec*

PAT MENCHINI



WOOL  
CLASICA

## MATERIALS

### Manos del Uruguay Wool

#### Clasica

#### Sweater

**Main shade** (ganges 2106)

7 7 8 8 8

8 9 100g Hanks

**Contrast (mercury 2800)**

2 2 2 2 2

2 2 100g Hanks

#### Shoulder Shrug

**Main shade** (ganges 2106)

3 3 3 3 3

4 4 100g Hanks

**Contrast (mercury 2800)**

1 1 1 1 1

1 1 100g Hank

Pair needles each Nos 5 mm, 6 mm and 6½ mm (UK 6, 4 and 3, USA 8, 10 and 10½).

## MEASUREMENTS

### To fit bust

81 86 91 97 102

107 112 cm

32 34 36 38 40

42 44 in

### Length from shoulder

68 69 69 70 71

71 72 cm

26¾ 27 27 27½ 28

28 28½ in

### Sleeve length

47 47 47 47 47

47 47 cm

18½ 18½ 18½ 18½

18½ 18½ 18½ in

## TENSION

16 sts and 20 rows to 10 cm (4 in) over plain stocking stitch using 6 mm needles.

Because of the unusual nature of this hand spun yarn, it is imperative that you check your tension carefully before commencing the garment. If your tension is too loose, try a size smaller needle; if your tension is too tight, try a size larger needle.

## ABBREVIATIONS

**K**, knit;

**P**, purl;

**st(s)**, stitch(es);

**st st**, stocking stitch;

**patt**, pattern; **i**

**nc**, increase, increasing;

**dec**, decrease, decreasing;

**yfwd**, yarn forward;

**tog**, together;

**SKPO**, slip 1, K1, pass slipped st over st just knitted;

**beg**, beginning;

**alt**, alternate;

**rep**, repeat;

**cont**, continue;

**rem**, remain(ing);

**fol**, following;

**R(W)S**, right (wrong) side facing;

**cm**, centimetres;

**in**, inches;

**M**, main shade;

**C**, contrast.

## BACK

Using 5 mm needles and **M**, cast on 83 (89: 95: 101: 101: 107: 113) sts.

**1st Row (WS)**: K1, (P1, K1) to end.

**2nd Row**: K2, (P1, K1) to last st, K1.

**3rd Row**: As 1st row but inc 10 sts evenly across.

93 (99: 105: 111: 111: 117: 123) sts.

Change to 6½ mm needles and border patt

**NB**:- Carry colour not in use loosely across WS over not more than 2 sts at a time.

**1st Row (RS)**: K, **3M**, (**3C**, **3M**) to end.

**2nd Row**: P, **3M**, (**3C**, **3M**) to end.

**3rd Row**: K, **1M**, **1C**, **1M**, (**3C**, **1M**, **1C**, **1M**) to end.

**4th Row**: As 2nd.

5th and 6th Rows: As 1st and 2nd.

**7th Row**: K, **3M**, (**1C**, **1M**, **1C**, **3M**) to end.

**8th Row**: as 2nd.

Rep these 8 patt rows twice more, then 1st and 2nd rows again.

Break **C**.

Change to 6 mm needles and knit 1 row

**Next Row**: P7 (6: 5: 4: 2: 0: 10), \* P2tog, P2 (2: 2: 2: 3: 3: 2); rep from \* to last 10 (9: 8: 7: 4: 2: 13) sts, P2tog, P8 (7: 6: 5: 2: 0: 11).

73 (77: 81: 85: 89: 93: 97) sts.

Beg K row cont in st st in **M** until work measures 33 cm (13 in) from beg, ending after a P row.

Change to 6½ mm needles and

cont in st st with snowflake border

**1st Row**: **1M**, (**1C**, **1M**) to end.

**2nd Row**: **1C**, (**1M**, **1C**) to end.

\*\* 3rd and 4th Rows: In **M**.

NB: Carry colour not in use across WS on next 13 rows over not more than 2 sts at a time.

**Next Row**: K6 (8: 10: 4: 6: 8: 10) M, (work 1st row of chart, K**3M**) 3 (3: 3: 4: 4: 4: 4) times, work 1st row of chart, K6 (8: 10: 4: 6: 8: 10)**M**.

**Next Row**: P as last row but working 2nd row of chart.

Rep the last 2 rows 5 times more, then first row again but working 3rd to 13th rows of chart.

**Next 2 Rows**: **M**.

**Next 2 Rows**: As 1st and 2nd. \*\*

Now work from \*\* to \*\* once more but reading P for K when working 1st row of chart, and K for P when working 2nd row of chart.

Break **C**.

Change to 6 mm needles and cont in M in st st until back measures 68 (69: 69: 70: 71: 71: 72) cm, 26¾ (27: 27: 27½: 28: 28: 28½) in from beg, ending after a P row.

## SHAPE SHOULDERS

Cast off 6 (7: 7: 7: 8: 8: 9) sts at beg of next 6 rows, then 8 (6: 8: 9: 8: 9: 8) sts at beg of foll 2 rows.

Slip rem 21 (23: 23: 25: 25: 27: 27) sts on a spare needle.

## FRONT

Work as back until front measures 8 (8: 8: 10: 10: 10: 12) rows less than back up to shoulder shaping, ending after a P row.

## SHAPE NECK

**Next Row**: K29 (30: 32: 33: 35: 36: 38), turn.

Cont on these sts for first half of neck.

Dec 1 st at neck edge on next 3 rows.

26 (27: 29: 30: 32: 33: 35) sts.

Work 4 (4: 4: 6: 6: 6: 8) rows straight.

## SHAPE SHOULDER

Cast off 6 (7: 7: 7: 8: 8: 9) sts at beg of next and 2 foll alt rows.  
Work 1 row.  
Cast off rem 8 (6: 8: 9: 8: 9: 8) sts.

With RS facing, slip centre 15 (17: 17: 19: 19: 21: 21) sts on a spare needle. Rejoin **M** to rem sts and knit 1 row.  
Complete as first half but working 1 row more before shaping shoulder.

### SLEEVES

Using 5 mm needles and **M**, cast on 31 (33: 33: 35: 35: 37: 37) sts.  
Rep 1st and 2nd rows of rib as on back 5 times.  
Next Row: As 1st row inc 10 sts evenly across.  
41 (43: 43: 45: 45: 47: 47) sts.

Change to 6 mm needles and beg K row work 8 (8: 2: 2: 2: 2) rows in st st.  
Cont in st st shaping sleeve by inc 1 st at each end of next row, then on every foll  
6th (6th: 6th: 4th: 4th: 4th: 4th) row until there are 57 (59: 57: 53: 59: 67: 73) sts, then on every foll 6th row for all sizes until there are 63 (67: 69: 73: 75: 79: 81) sts.  
Cont straight until sleeve measures 47 cm (18½ in) from beg.  
Cast off loosely.

### NECKBAND

First join left shoulder. Using 5 mm needles and **M**, with RS facing, K across sts of back inc 6 sts evenly across, K up 11 (11: 11: 13: 13: 13: 15) sts evenly down left front neck, K across front neck sts inc 4 sts evenly finally K up 12 (12: 12: 14: 14: 14: 16) sts evenly up right front neck.  
69 (73: 73: 81: 81: 85: 89) sts.  
Work 14 rows in rib as on back.  
Cast off loosely in rib.

### SHOULDER SHRUG (2 pieces alike)

Using 5 mm needles, cast on 113 (117: 121: 127: 131: 135: 139) sts.  
Work 5 rows in rib as on back omitting increases.

Change to 6 mm needles and st st and beg K row work 2 rows in st st dec 10 (10: 10: 12: 12: 12: 12) sts evenly on last row.  
103 (107: 111: 115: 119: 123: 127) sts  
\*\* Join in **C** and work patt band  
**1st Row: 1M, (1C, 1M)** to end.  
**2nd Row: 1C, (1M, 1C)** to end.  
Break **C** \*\*\*.

Work 2 rows straight.  
**Dec Row: (K6, SKPO)** 4 times, K to last 32 sts, (K2tog, K6) 4 times. (8 sts decreased)  
Work 11 rows straight. \*\*\*\*  
Work from \*\* to \*\*\*\* once more.  
87 (91: 95: 99: 103: 107: 111) sts  
Now work from \*\* to \*\*\* once more.

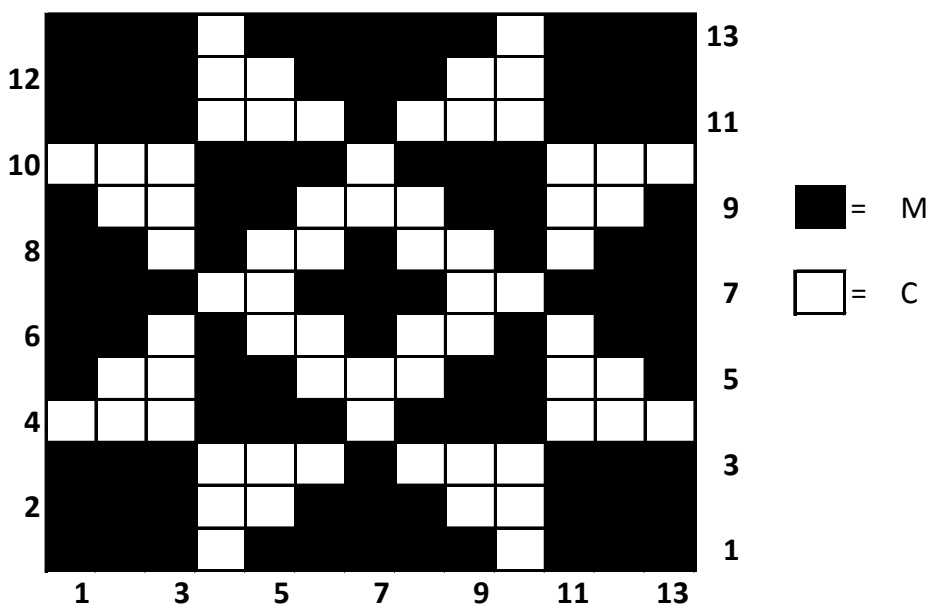
Work 4 rows in st st.  
Now work 7 more rows in st st dec 1 st at each end of every K row.  
79 (83: 87: 91: 95: 99: 103) sts  
**Next Row: P14 (8: 18: 12: 22:**

16: 10), (P2tog, P2) 12 (16: 12: 16: 12: 16: 20) times, P2tog, P to end.  
66 (66: 74: 74: 82: 82: 82) sts

Change to 5 mm needles and work 2 rows in st st as on back.  
Next Row (on which holes for cord are made): K2, (yfwd, K2tog, K2) to end.  
**Next Row: P.**  
**Next Row: K dec 10 sts evenly across.**  
56 (56: 64: 64: 72: 72: 72) sts  
Work 4 more rows in st st beg P row.  
Cast off.

### TO MAKE UP

Press work on WS. Join right shoulder and neckband. Stitch cast-off edge of sleeves to side edges of back and front. Join side and sleeve seams. Join side edges of shoulder shrug. Using 2 strand of remaining yarn, make a twisted cord approx 182 cm (72 in) long and lace through holes at neck. Using remainder of yarn, make 2 pompoms and attach one to each end of cord.  
Press seams.



### Important:

**We recommend buying enough yarn to complete a project. If there is a great difference between skeins, we recommend knitting two rows from one skein and two rows from another skein to give an overall blended effect.**

This design must not be knitted for resale. Reproduction in whole or part is strictly forbidden unless prior consent has been given in writing.

credits: Knitwear Design by Pat Menchini for Artesano Ltd.  
Graphic Design by Fern Spooner  
Photography by David Hatfull of  
Diem Photography

© Artesano Ltd. 2008. These patterns are sold on the  
understanding that they should not be knitted for re-sale

For more details of the collection and to find  
your nearest stockist please visit our website  
[www.artesanoyarns.co.uk](http://www.artesanoyarns.co.uk) or call us on  
0118 9503350



Suggested alternative



2370 Mississippi



2800 Mercury