

rayna

by rita taylor

artesano  
*Superwash*  
merino wool

**MATERIALS:**

**Artesano Superwash Merino**

50gms 2083 (Fuchsia), 1 ball

50gms 6315 (Lime), 1 ball

Set of 3.75mm double pointed needles, tapestry needle, stitch marker

**SIZE:** 21.5cm (8.5in) Hand Circumference

**TENSION:** 26 sts and 26 rows to 10cm (4in) over chart pattern.

**ABBREVIATIONS:**

**M1** = Make 1 by picking up strand before next st and knitting into back of it.

**LEFT MITTEN**

**Cuff:**

Using Lime, cast on 44 sts and join to work in the round. Place marker for beg of rnd.

Work in K2, P2 rib for 5 rnds.

Cont in rib, work 3 rnds in Fuchsia, 2 rnds in Lime, 1 rnd in Fuchsia, 2 rnds in Lime, 3 rnds in Fuchsia, and 3 rnds in Lime.

Continue with Lime and knit 1 rnd (Rnd 1 of Chart).

Note: Chart is worked in St st (knit every rnd).

**Begin Thumb Gusset:**

**Next rnd:** Work Rnd 2 of chart, increasing for thumb gusset as noted in chart. (46 sts)

Continue in chart until Rnd 11 has been completed. (54 sts)

**Separate Thumb from Hand:**

On Rnd 12, patt to bordered thumb gusset sts and slip these 11 sts on to waste yarn. Cast on 11 sts over gap, alternating 1 st Lime and 1 st Fuchsia.

Work from chart until Rnd 50 has been completed. (10 sts rem)  
Break off yarns, thread through sts, draw up and fasten off.

**Thumb**

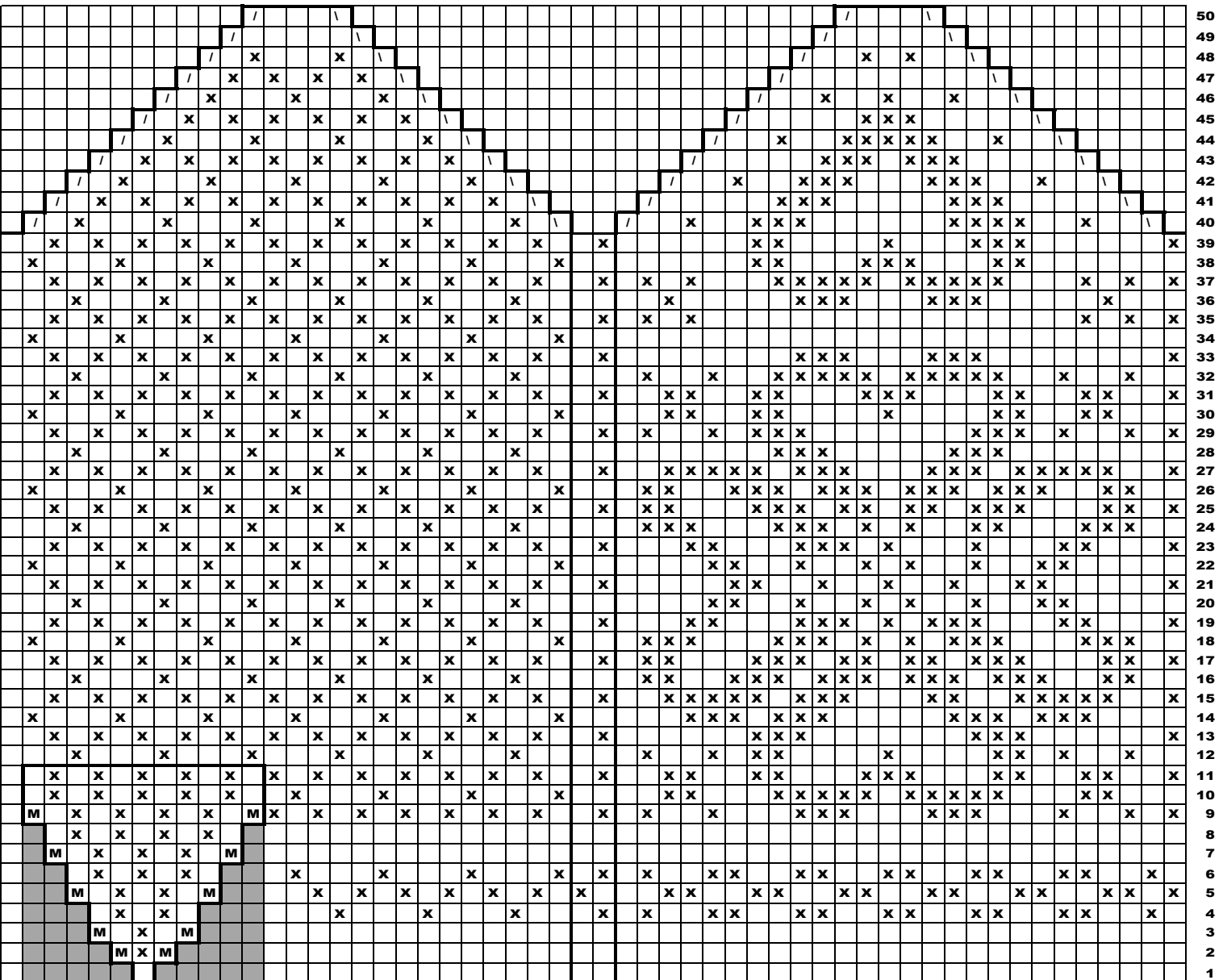
Place 11 sts from waste yarn on to needle, pick up 1 st from between these and cast on sts, pick up 11 sts from cast on edge, pick up 1 st from between cast on and front of thumb. (24 sts)

Work through Rnd 19 of Thumb Chart, decreasing as per chart to 8 sts. Break off yarns, thread through sts, draw up and fasten off.

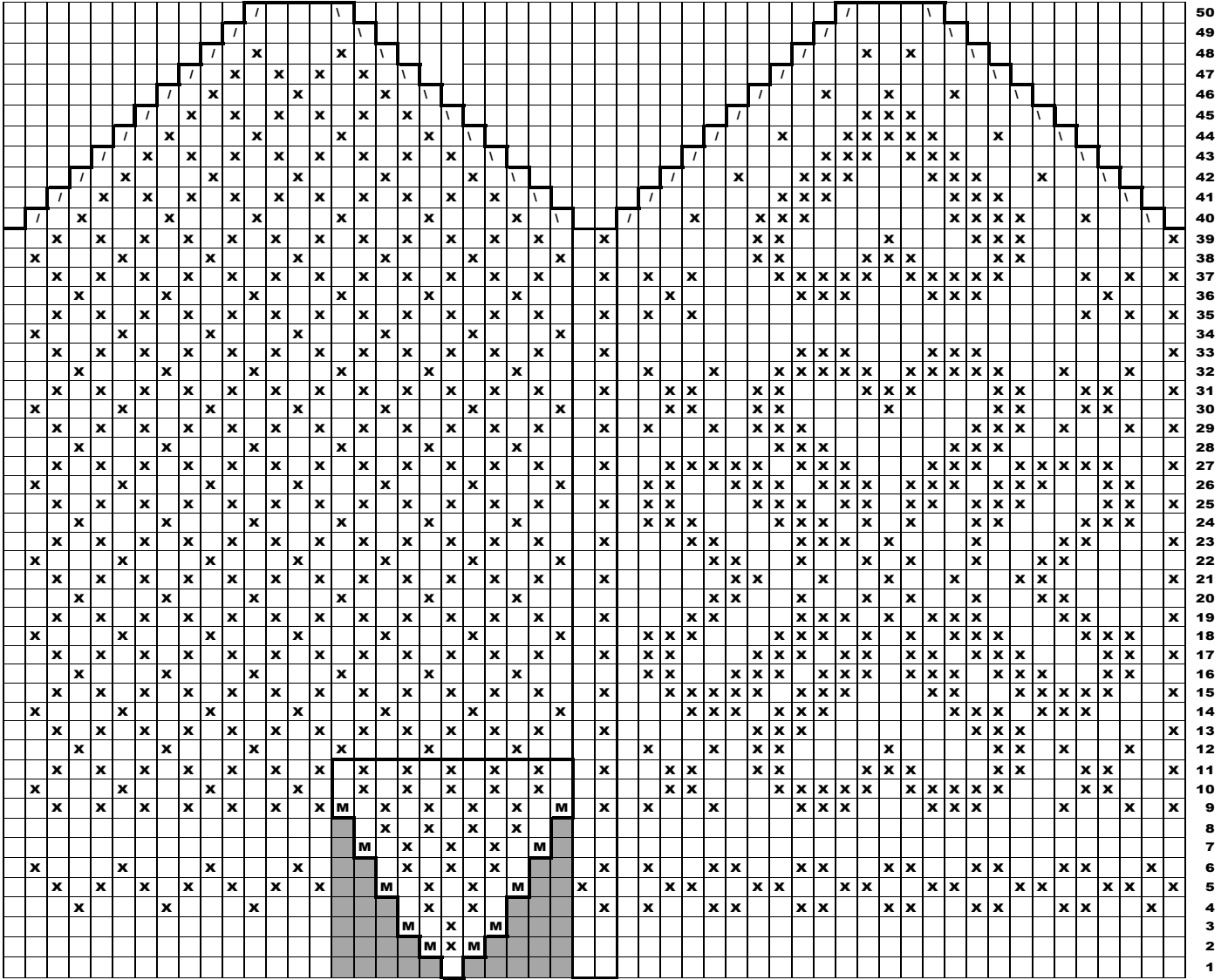
**RIGHT MITTEN**

Work as for Left Mitten, following chart for Right Mitten.

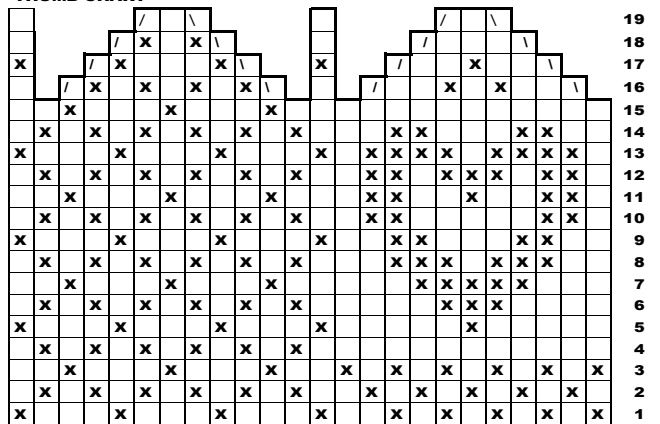
**LEFT MITTEN**



**RIGHT MITTEN**



**THUMB CHART**



- Lime
- x Magenta
- \ Ssk
- / K2tog
- M M1
- No Stitch

All sts are worked in St st

# artesano

*Superwash*  
merino wool



Suggested alternatives



Distributed in Europe by Artesano Ltd, a family run business based in Berkshire, England  
We pride ourselves in supplying excellent quality yarns at affordable prices.  
Artesano Ltd, Unit G, Lamb's Farm  
Business Park, Basingstoke Rd,  
Swallowfield, Reading, RG7 1PQ,  
0118 9503350  
[www.artesanoyarns.co.uk](http://www.artesanoyarns.co.uk)  
[info@artesanoyarns.co.uk](mailto:info@artesanoyarns.co.uk)

Credits: Knitwear Design by Rita Taylor  
Graphic Design by Fern Spooner  
Photographs by David Hatfull of Diem Photography  
Styling by Fern Spooner and Sam Brownell  
Make-up By Sam Brownell  
© Artesano Ltd. 2011. This design must not be knitted for resale. Reproduction in whole or part is strictly forbidden unless prior consent has been given in writing. Copyright 2011 text, pattern design & illustration Artesano Ltd